

EXPLORATIONS INCORPORATED OF NEVADA

702 649-6819
Summer 1998
2908 E. Lake Mead Blvd.
North Las Vegas, Nevada 89030

KOKOWEEF PEAK, MTN. PASS, CA

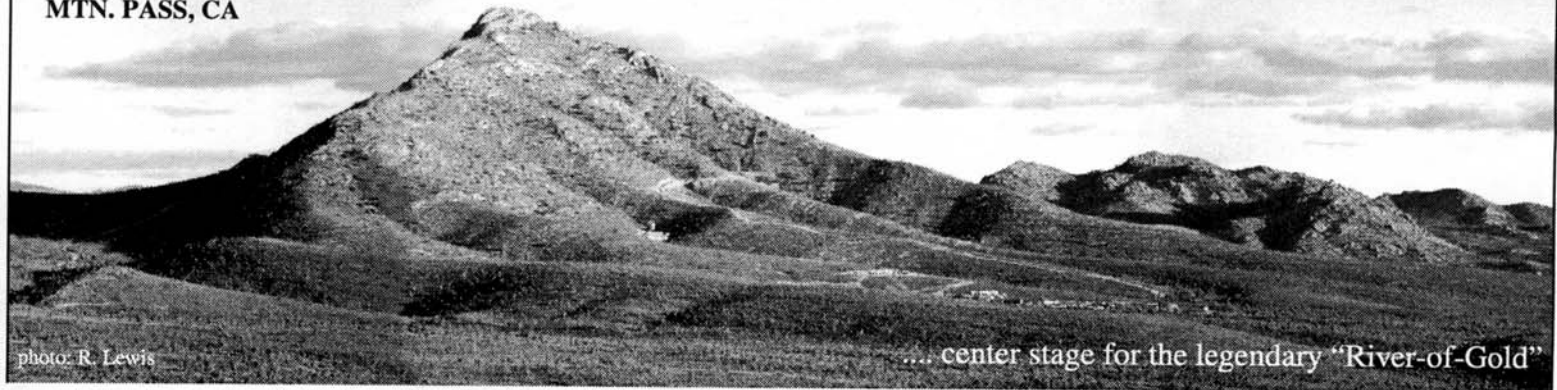


photo: R. Lewis

... center stage for the legendary "River-of-Gold"

1998 Picnic . . . Biggest & Best News Ever!

3' x 4' Aerial Photos - New Maps - Video Tours - 3-D Models - Crystals - Guest Speakers

WELCOME CHANGES

Like a bolt out of the blue, good news has us really buzzing! Diamond drilling for steep and deep targets is now abandoned in favor of new, **LARGER** electronic targets. These are located higher up, **at the tunnel-level** of the patented Carbonate King Mine, but several hundred feet south! How did this sudden change come about in just two months?!

Well our first good news came from test results using a sensitive, electronic velocity meter, this proves both Cathy's Cave and the Rusty Red Hole have mild but steady air-flow coming UP from the bottom!

At the same time, rumors again surfaced about wanting to "...tunnel in the Carbonate King". Yet earlier, shallow surveys had not looked down to and below the level of these tunnels so there were no clear and reasonable targets. While it's understandable folks like us like to keep busy, this truly would have been "shooting in the DARK!" The best course of action was simply to look deeper electronically under previous shallow survey lines "F", "G", & "H". Due to the measured air flow, we first extended electronic survey lines "H" & "F" to look below Cathy's Cave and the Rusty Red Hole, respectively, and then the middle line "G" over the Carbonate King tunnels.

Fortunately, Mr. V.G. Hewitt, President of Geo-western, was willing to reschedule and give us a time-slot on a good weekend. Nasty, winter weather tried to intervene but it couldn't stop Ralph. We set these three electronic survey lines in record time. Next, a rapid assembly of volunteers enabled three days of crucial deep-search electronic surveys. It's an understatement, but sure

enough, we found high-resistance indications suggesting a large, hidden cavern probably exists down slope from Cathy's Cave and, much more dramatically, under a vertical fault seen on the surface very close to both the EM-83 site and Rusty Red Hole project. The results from this "electronic drilling" are absolutely amazing and unlike the scale or character of anything we've seen before! They are the "Best-of-the-Best!" See'em at the picnic!

AERIAL PHOTOGRAPHY

As mentioned in the February newsletter, we had a desire to take aerial photos of ourself to document the EM-83 site before any digging began. But results from deep-searching compelled us to have more terrain professionally documented using high-resolution photography in both color and black & white! An incredible 3'x4' photo recorded the entire mountain and it shows plants as small as one foot across! The features seen reveal a "Big Picture" which is otherwise impossible to realize even by hiking over the ground for a lifetime. Now we **see and know** of multiple, previously unidentified geological faults. We know their directions and where they intersect in a detailed color image. Most important, we have dramatic, physical evidence which could aid us tremendously in solving the mystery of accessing what may be a world-class cavern or, hopefully, a way down to the long-lost, legendary "River of Gold"!

NO GUARANTEES... But!

Of course, electronic surveys are less than "photographic" and more interpretive since they are generated from invisible energy and data beyond our familiar experiences. Yet, compared to imagination in the "unmeasured dark", when electronics is combined with aerial photography we find a **pleasant path leading to new awareness and understanding.**

What we don't know now is how much the electronic data may be skewed by "current channelling" or "geometric effects" from non-homogeneous material. However, **WE DO KNOW** that these surveys have located very high resistances which are electronic anomalies and these correlate well with known voids previously located using this same method. Truly, we have now identified the **LARGEST AND DEEPEST ELECTRONIC ANOMALIES** to date. These worthy targets **definitely need us to continue cavern excavations and begin horizontal diamond drilling.** Our task now is to **FINISH THE WORK.** Let's prove the value of what's been so brilliantly illuminated after rising from The Awareness guiding our quest.

(study photos and text inside)

CHECK-IT-OUT!

As usual, we're left with the same issue tied to all progre\$\$\$. So, if you're wondering how we could afford the extra, un-budgeted aerial and electronic surveys... well, we "couldn't." It's called "robbing Peter

to pay Paul". Was it worth the unplanned costs of \$5,000.00 ? - **DEFINITELY!** Taking no action costs less but ignorance is much more "expensive"!

"The art of being wise is knowing what to overlook"

-William James

Now, despite a good February re\$pon\$e, we over spent "wisely" so we're still in need of YOUR help in ALL ways. **WEATHER IS GREAT NOW & WE NEED HELP ON SITE TO PICK UP THE PACE!** Also, if it's affordable, and you can sense the potential coming from the work needing to be done, please keep us going with regular monthly effort\$ and return it with the enclosed R.S.V.P. survey A.S.A.P. PLEASE don't wait for the picnic to "CHECK"-IT-OUT because IT'S needed NOW to keep today's work going.

More than ever

THANK YOU!

EXPLORATIONS INC. OF NEVADA

This newsletter is published three times a year to keep Investors advised of the progress being made at Kokoweef Peak in the ongoing search for the legendary caverns, and as a reminder to all Investors that their investments are needed.

President/Treasurer Larry Hahn
Newsletter Editor, Research,
New Insights,
Photography Ralph Lewis
Assistant Skip Wynia
Camera Equipment Jack Denton
Computer Graphics kinkos

© 1998 E.I.NV and R.E. Lewis

**Our 1998 Annual Picnic & Business Meeting
Begins 9am on Sunday, June 7th at Kokoweef.**

HISTORY-MYSTERY IS BEING SOLVED!

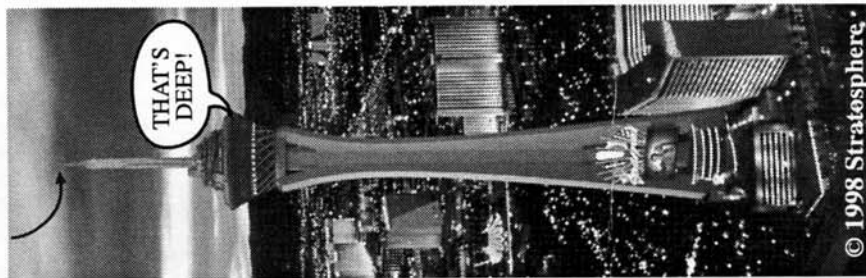
Geology, Electronics, Aerial Fault Mapping & Air Flow Measurements Combine to Reveal Amazing "IN-sights," LET'S "CHECK"-IT-OUT!

The Las Vegas
STRATOSPHERE
TOWER is

1,149 feet tall

28 March, 1998:

Snow-melt Anomaly
at unsurveyed area.



© 1998 Stratosphere.

Make Your

Room Reservations

A.S.A.P.

Stratosphere Tower

1-800-99-Tower (86930)

StateLine (Now Primm Valley)

1-800-FUN-STOP

L.V. Conv. & Visitors Auth.

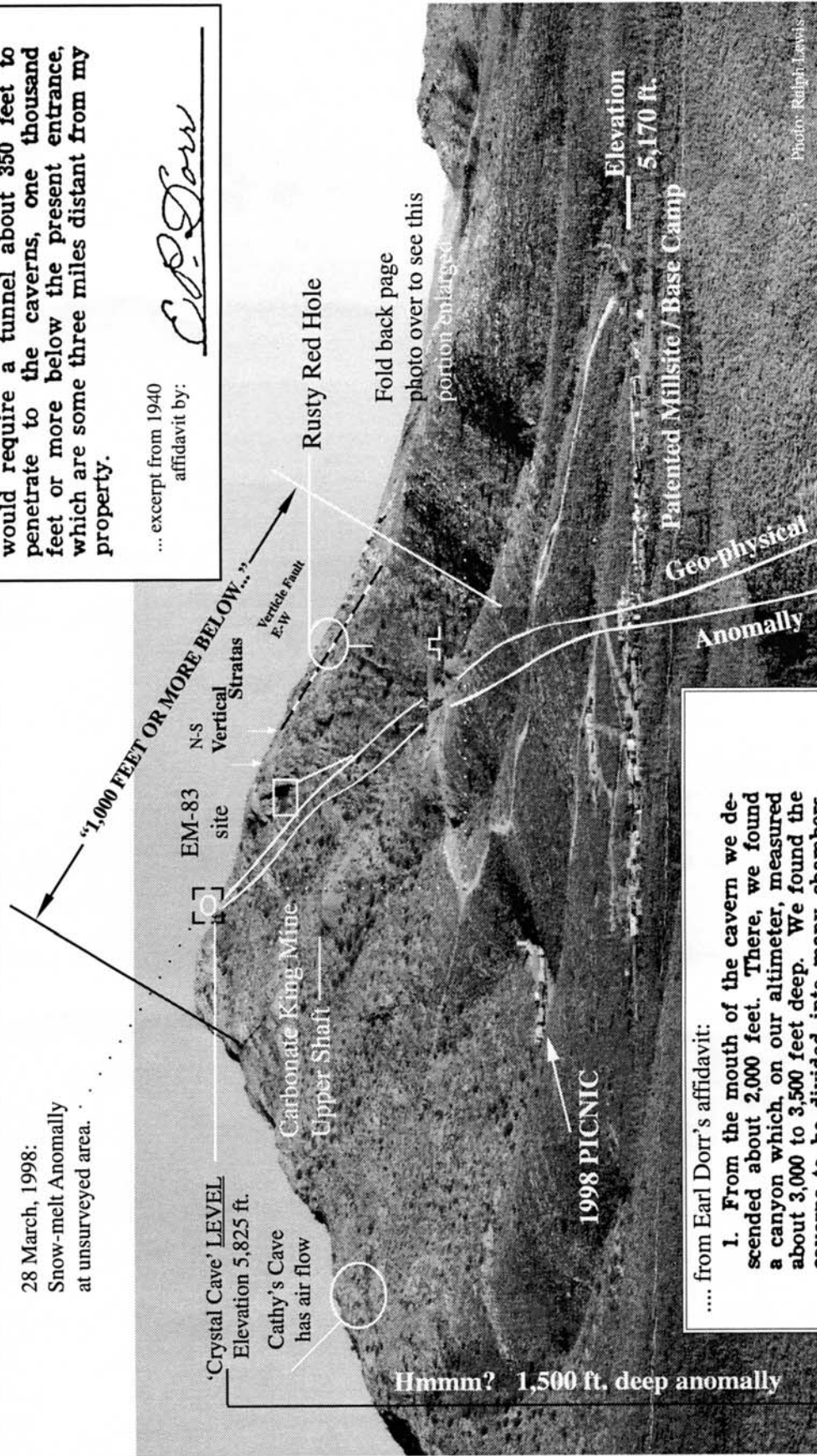
1-800-323-5333

© California Mining Journal, November, 1940

7. From engineering measurements and observations we made, I estimated that it would require a tunnel about 350 feet to penetrate to the caverns, one thousand feet or more below the present entrance, which are some three miles distant from my property.

... excerpt from 1940
affidavit by:

E. D. Dorr



.... from Earl Dorr's affidavit:

1. From the mouth of the cavern we descended about 2,000 feet. There, we found a canyon which, on our altimeter, measured about 3,000 to 3,500 feet deep. We found the caverns to be divided into many chambers, filled and embellished with the usual stalactites and stalagmites, besides many grotesque and fantastic wonders that make the caverns one of the marvels of the world.

© C.M.J., 1940

PHOTO ABOVE: Kokoweef Peak, S.E. View

The tube-like electronic anomaly depicted here is a simplified "x-ray" view of invisible, electronic data interpretations. This is our longest, most complex and the deepest cavern potential to date. The Stratosphere Tower, at left, is set to a scale to help show what we believe may be the depth of the feature we're "seeing."

PLEASE NOTE:

It's not easy to show 3-D concepts clearly on flat 2-D pictures. (The tube-like anomaly starts behind the horizon-line.) For a better 3-D understanding, study the bottom photo... or BETTER YET...

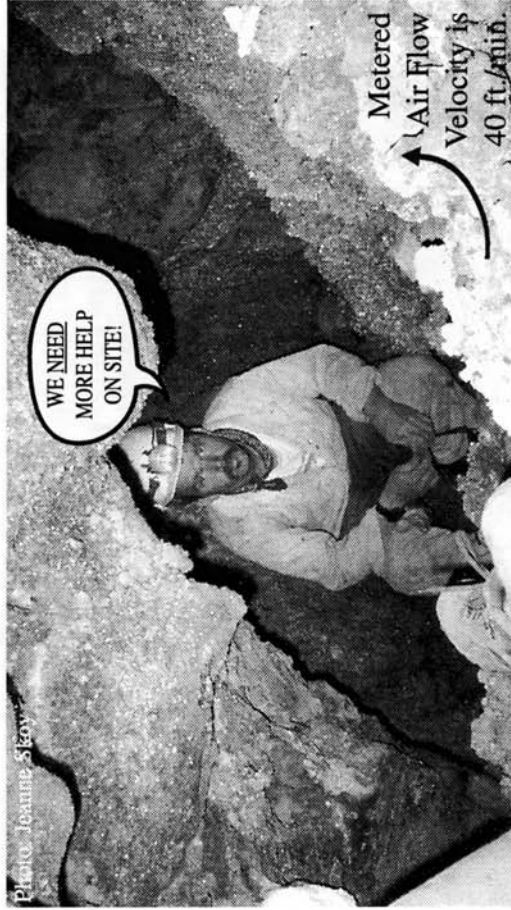
COME TO THE BEST PICNIC EVER!



PLAN EARLY, ARRIVE EARLY, STAY LATE!

Photo Below: Ron Graham, with the help of a few part-time volunteers, has discovered a large 6th chamber 72 feet down in the good ol' Rusty Red Hole. . . . AND! . . . a sensitive electronic instrument **positively confirms air flow** up from the bottom!!! We thank him and the handful of good people* who helped keep this project going through the difficult winter months!

* Jerry McKee, Dick & Jeanne Skoy, Jimmy Serrill, John N., Robert L., Ralph, Steve, Eddie & Alison and every off-site investor like you!



Kokoweef Peak

... Looking East
(Patented Mining Claims)

South ➡

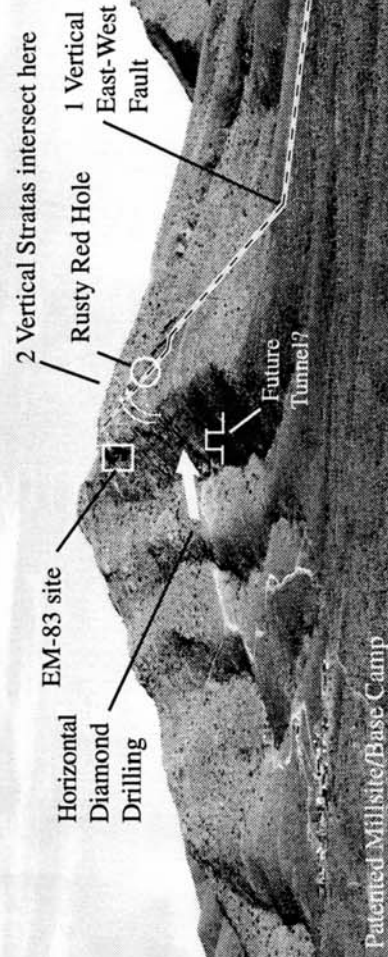


Photo: R. Lewis

"In all things of nature there is something of the marvelous." - Aristotle

Get fully informed at the . . .

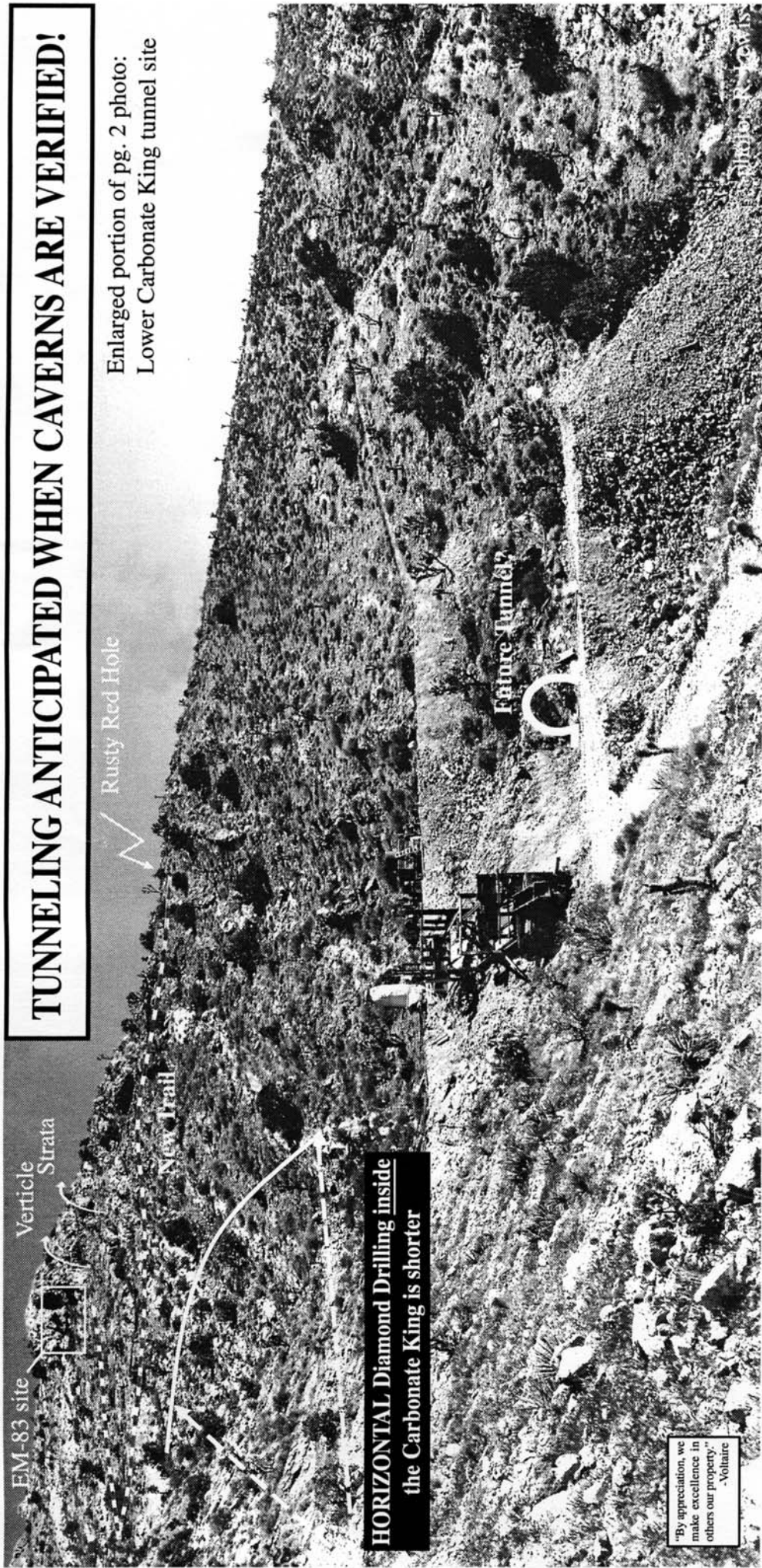
1998 ANNUAL INVESTOR'S & STOCKHOLDER'S MEETING!

- Come To The Picnic & You'll Leave Smiling •
- JUNE 7TH, SUNDAY (9AM) AT KOKOWEEF PEAK**
- Meet Your Board of Directors - We're Excited •
- Feast, Have Fun, Ask Questions & You'll Be Excited, Too!

➤ Fold UP here to see ENLARGMENT of PHOTO portion outlined above. ➤

PHOTO BELOW: First, find the "1 Vertical East-West Fault" line. Next, notice that "2 vertical Stratas" (2 curved arrows) are intersecting the single-fault line. These are three major faults (weak areas) and, typically, caverns form more easily at intersections. On the surface, these three are each seen to be large and nearly vertical. The new mid-March, deep-search electronic survey and aerial photo shines a bright "light" into this area of the mountain. The electronic mapping suggests a curious link to stories and related accounts surrounding Earl Dorr and the legendary "River-of-Gold"!

COME TO THE PICNIC THIS YEAR AND YOU'LL FIND OUT WHY WE THINK SO . . . THEN DECIDE FOR YOURSELF!



TUNNELING ANTICIPATED WHEN CAVERNS ARE VERIFIED!

Enlarged portion of pg. 2 photo:
Lower Carbonate King tunnel site

ABOVE: Enlarged S.E. view of the **Lower Carbonate King**. One likely site for a new tunnel to begin is indicated. However, the new data needs to be physically verified **FIRST**, either by digging into the tube-like feature or probing through drill holes with cameras and/or measuring steady air-flow.

Fold to view with photo on pg. 2

Fold here

Left Photo: (L. to R.) Steve, Eddie, and Alison all think alike . . . but Ron has the **BEST** idea!

Active investors are the important element in supporting our efforts. Thanks again! You **ARE** appreciated because proving the "River-of-Gold" exists is a concerted group effort.

The Descent Team is practicing to safely explore deep, vertical caverns as a well-trained unit. We expect to bring videos back for the less adventurous, and who knows, maybe more!
... Well, until then . . .

PLEASE COME TO THE PICNIC!



"Imagination was given to man to compensate him for what he is not; a sense of humor to console him for what he is."

- Francis Bacon

Photo: R. Lewis