

EXPLORATION INCORPORATED
OF NEVADA



2908 E. Lake Mead Blvd.
North Las Vegas, Nevada 89030
702 649-6819
Spring 1997

EM-83 ELECTRONIC PULSE-DETECTOR SPARKS NEW-FOUND ENTHUSIASMS!

Everyone at camp says "Thank You!" to all the volunteers and investors who helped us so much last year...and we wishing you all a belated "HAPPY NEW YEAR!". Enthusiasm is in high gear despite winter's arrival because discovering a new cave has that effect on us.

Our EM-83 electronic pulse-detector has mapped out several previously hidden anomalies. We are fortunate one of these electronic cavern indications had a feature connected to the surface. Though plugged with blow-sand and rocks eroding over time, this eliminated the need for drilling and blasting. In fact, we had identified this spot on the previous newsletter's map but it still was not physically proven.

Wayne and Cathy, a couple of inspired, retired & happily married investors, decided to visit and pitch in during the winter. The weather

hasn't exactly welcomed them here with its 30-40 mph winds, rain, cold and snow. But they wanted something to do right away.

After hearing about a group of large negative numbers, (cave indications) from an electronic survey, they changed those mapped numbers into a new discovery. In one day they dug down, on top of a solid-looking ridge, through 4 feet of loose dirt and stones plugging a soon-to-be-obvious, but still plugged, natural tube going down to (?) ...somewhere! Being new, it needed a name. Now it's "Cathy's Cave" to honor their initiative.

Exploration Inc. of Nevada

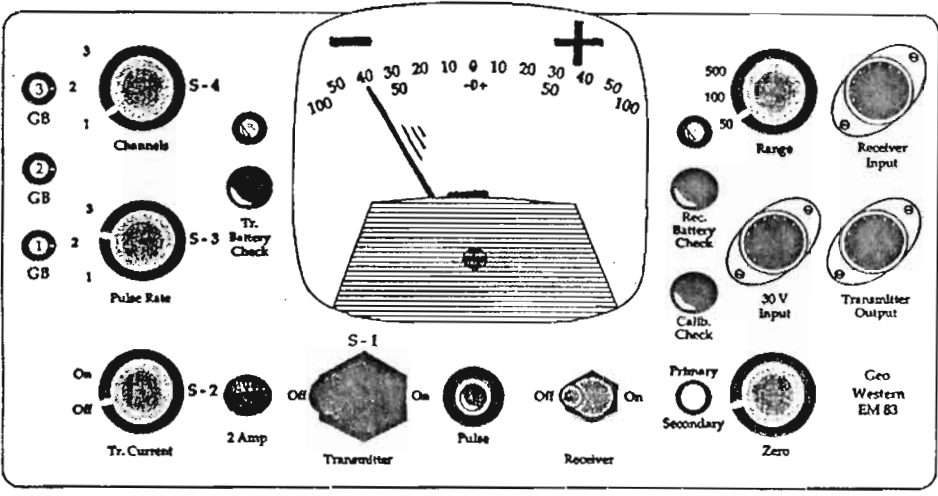
This newsletter is published three times a year to keep Investors advised of the progress being made at Camp Kokoweef in the ongoing search for the legendary caverns, and as a reminder to all Investors that their investments are needed.

President _____ Larry Hahn
Newsletter Editor _____ R.E. Lewis

©1997 E.I.N.V

Transmitter Controls

Receiver Controls



The EM-83 pulse-detector measures electrical conductivity in the ground. Caves or open faults block the flow of energy between its two coils, causing a negative meter deflection.

See map, pg 3

EM 83 Instrument Controls



Above: Wayne and Cathy at the top-side of "Cathy's Cave".



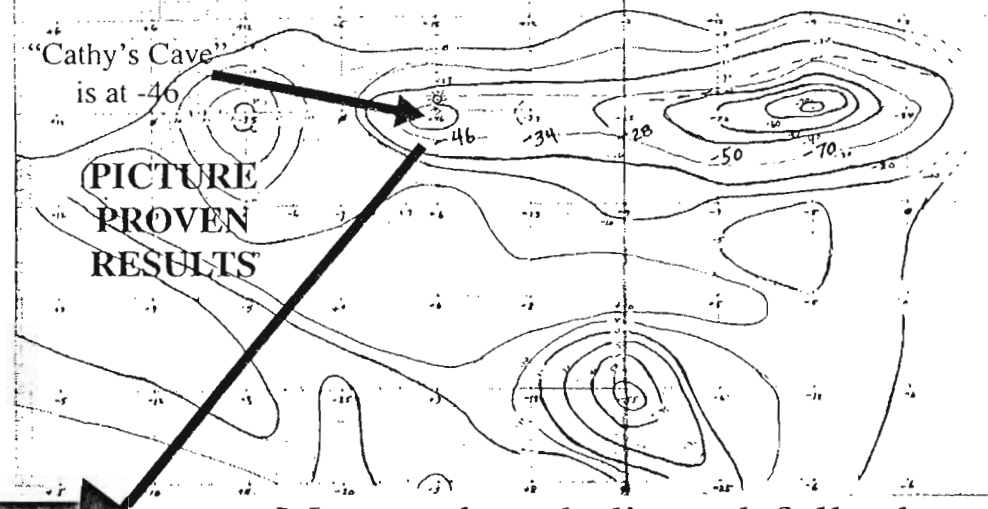
Right: Willy and Joyce are leaning over and looking straight down.

* (Hold the two cave photos on pg 2&3 at arm's length above your head, for a true vertical view!)

"If at 1st you don't succeed, you're running about average."
(this was Wayne & Cathy's first dig!
 M.H. Alderson

EM-83'S
PROVEN
RESULTS
PROVIDE
CONFIDENCE
IN ELECTRONIC
SURVEYS

EM-83 Electronic Map (Bird's eye View)



Many other dedicated folks have helped us dig down to 25 feet below the surface. We anticipate finding a passage or room somewhere below once we get past the fill-dirt at its entrance. We have noticed a small amount of air-flow from time-to-time but aren't sure if it signifies outside wind or internal pressures.

The amazing thing to realize is, being on top of the ridge above Kokoweef Cave, literally hundreds of Indians, prospectors, miners, treasure-hunters and hikers and other lost souls have walked over this cave in the 62 years since Earl Dorr wrote his famous affidavit in 1934.

Without the EM-83 survey, this surface-cave would have remained perfectly hidden for untold centuries into the future! This is why we are so optimistic, confident and **enthusiastic** about finding a passage into deeper caverns using electronic surveys. Even if this is not **THE** one we need, We have the means to locate unseen caves ... coupled with investment\$ and work.

Cathy's Cave - To be continued!

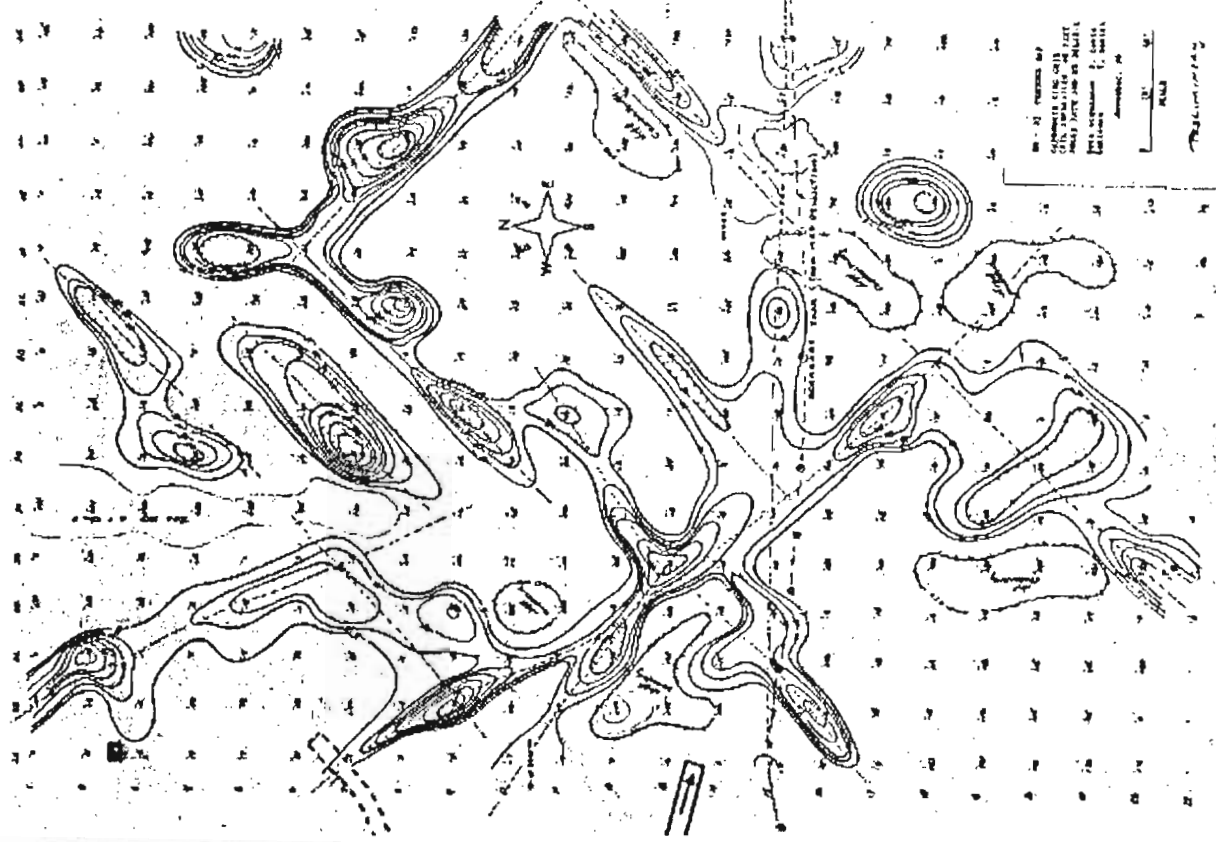
Investors - "Thanks again for the EM-83!"

C
A
R
B
O
N
A
T
E

K
I
N
G

M
I
N
E

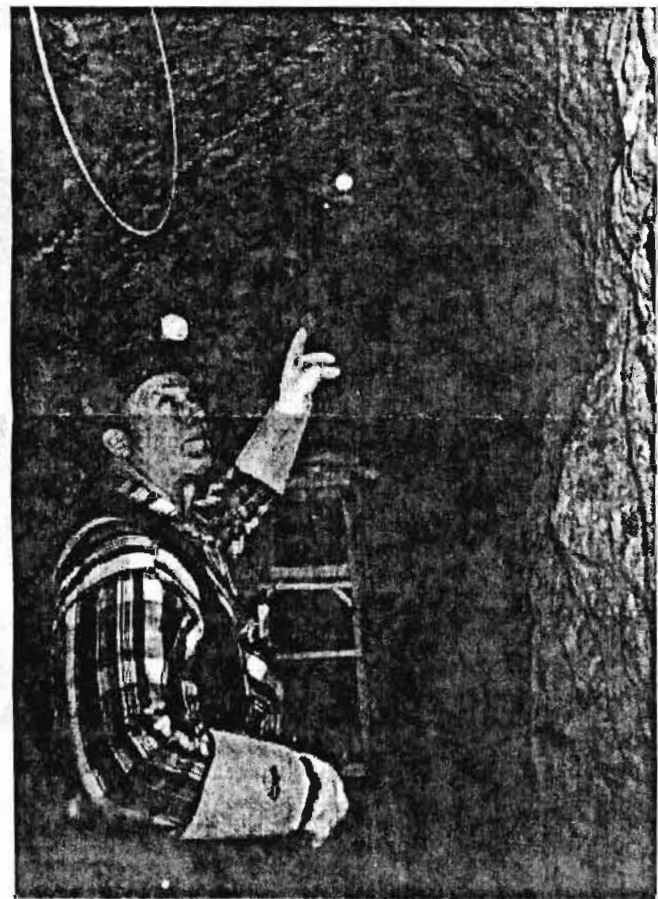
- More Electronic Successes -



The EM-83 electronic detector's Surface Survey, above the old Carbonate King Zinc Mine tunnels, indicates hidden cavities, mineral deposits and fault lines.

Although not visible at the surface, due to erosion material, the EM-83 indicates that Schnarr's Fault continues from the Crystal Caves all the way down to the tunnels in the Carbonate King Zinc Mine.

Left: Larry Hahn helps install air-vent line to extend the new, more accurate tunnel heading.



"It takes 20 years to make an overnight success."

. . . Larry knows this

Eddie Cantor

- Descent team is "Delayed" -

TEAM EQUIPMENT

- MRE'S
- POTABLE WATER
- HILTI GUN (SINGLE SHOT FOR ANCHORS OR EQUALIVANT)
- ROCK HAMMER (4)
- FIRST AID EQUIPMENT (KED & SKED)
- BED PAN & URINAL (ZIP LOCK BAGS)
- EXTRA BATTERIES AND LAMPS
- FLASHLIGHTS (2)
- CYLUME STIX (CASE)
- ANCHOR WEBBING 1"—16@ 20'
- EDGE PROTECTION (3/4" GARDEN HOSE 2')
- LOCKING CARABEANER S (ALUMINUM - 40)
- BLUE PLATES SPECIALS (4)
- ASCENDERS (4 SETS)
- STEEL HOOK (4-2")
- PRUSSIC MINDING PULLIES (8@ 2")
- BREAK BAR (4)
- PRUSSICS (16)
- STEALTH PRUSSICS (2)
- PICK OFF STRAPS (3)
- GIBBS (4)
- ROPE 4-200' 11mm KERN MANTLE STATIC
- 2-100' 11mm KERN MANTLE STATIC
- 60' HEAVY GREEN ROPE
- AIR QUALITY TEST EQUIPMENT

PERSONAL EQUIPMENT

- CHEST AND SEAT HARNESS
- HELMET W/ LIGHT AND CHIN STRAP
- KNEE & ELBOW PADS
- GLOVES
- CLOTHES (BDU'S)
- BOOTS
- CYLUME STIX (3)
- MRE AND WATER
- PACK (FANNY)
- LOCKING CARABEANERS (4)
- PRUSSICS (2)
- RESCUE 8
- CO DETECTOR

OTHER EQUIPMENT WILL BE ADDED AS NEEDED BY TEAM LEADERS AND INPUT OF TEAM MEMBERS AND APPROVAL OF LARRY HAHN



"There's got to be a better way to get folks and supplies in an' outta our 3,000 ft. canyon."

Our paramedics have completed the written Descent-Team Program. A special room, for storage and maintenance of the Descent-Team equipment, is being prepared. We'll have it fully stocked, for your inspection at the annual picnic if you help us out now (about \$2,500.00 for the team). Please help. Trained volunteers will need this equipment for immediate and safe exploration when we locate a major, open passage.

WE EXPECT TO SUCCEED THROUGH YOUR CONTINUING SUPPORT!

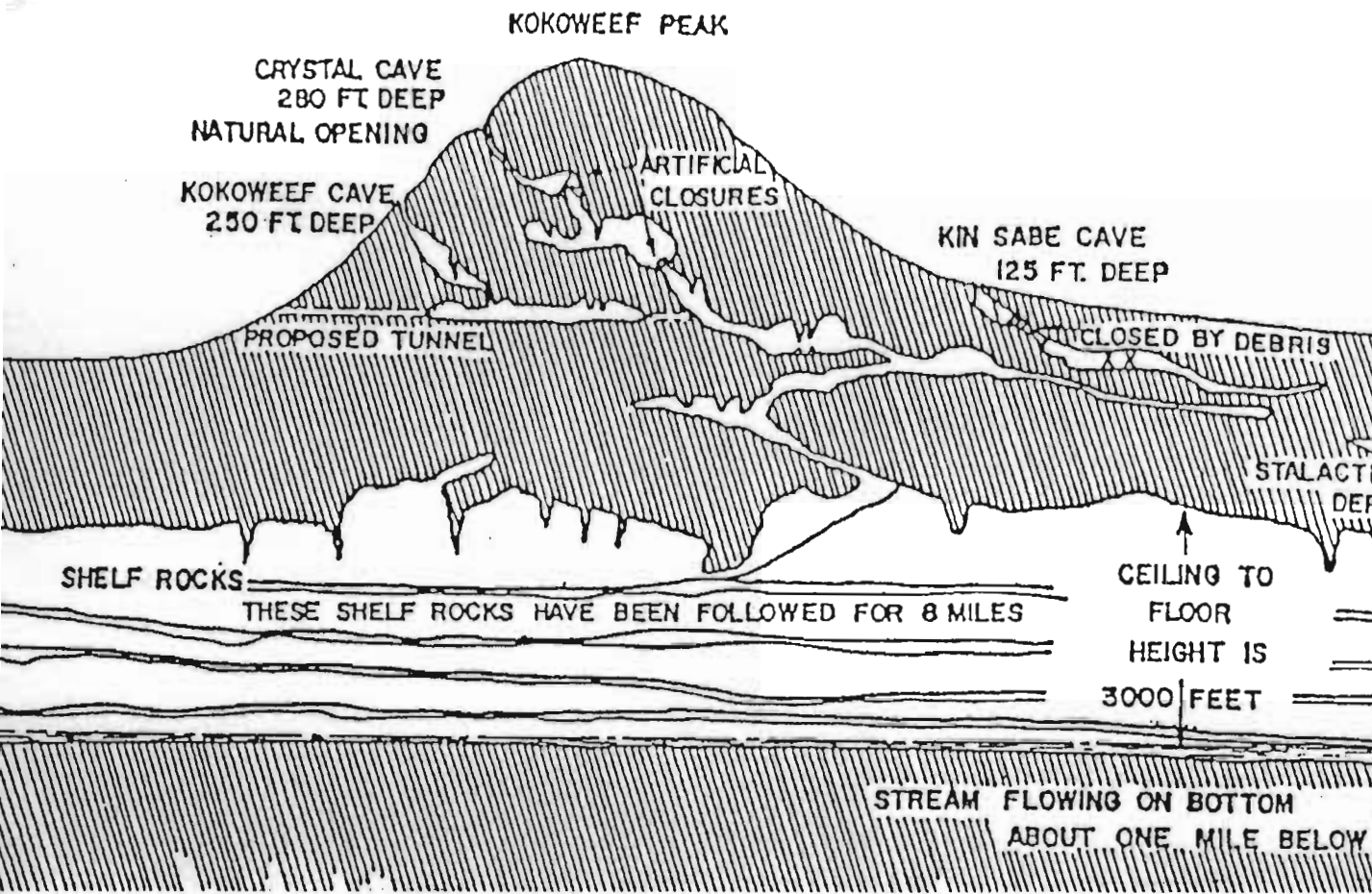
Interested in committing to the training program? Contact:

Steve Eckmark at (702) 371-9422 or (702) 438-6280

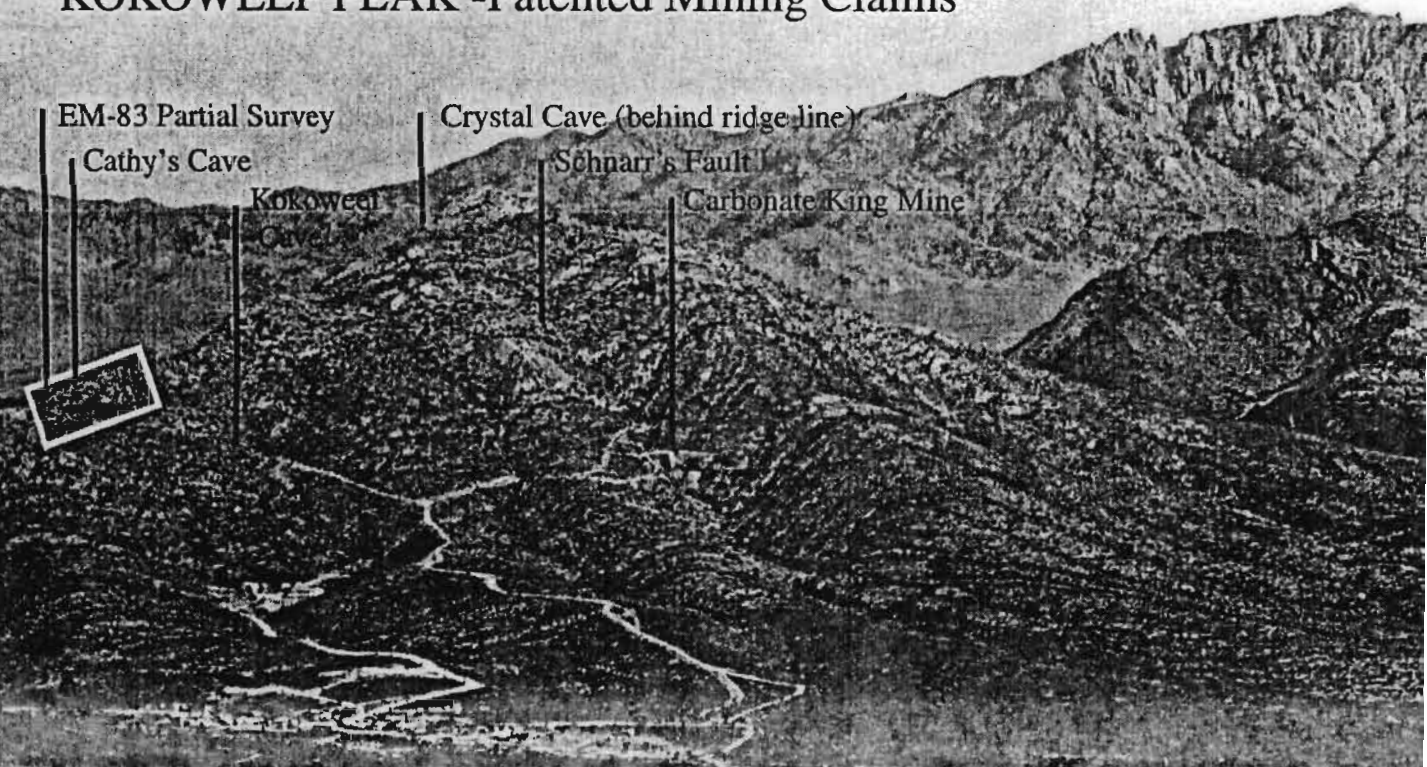
"The prettiest rocks I've ever seen are gold nuggets."

W. R.

... Gold's a suspected cure for gold fever. -R.E.L.



KOKOWEEF PEAK -Patented Mining Claims

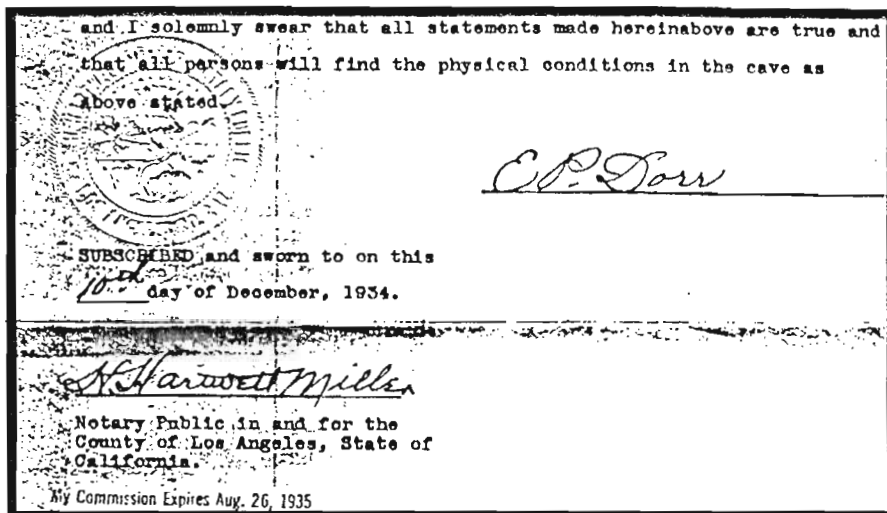


"Always take a job that's too big for you."

Harry Emerson

THE ANNUAL INVESTOR'S PICNIC IS SUNDAY, JUNE 1ST, 1997 AT KOKOWEEF

Our faith in this legend is based on one man's sworn statement and facts assembled from ongoing research. We finally have located the original notarized affidavit signed by Earl Paul Dorr.



Read its entire three pages at this year's annual investor's picnic!!!



EARL DORR'S AFFIDAVIT DESCRIBES THIS 3,000 FT. DEEP UNDERGROUND CANYON. IT DOES NOT DESCRIBE THE ORIGINAL SURFACE ENTRANCE.

New Technology ➤ New thoughts ➤ New Successes ➤ Our Goal

Our ULTIMATE geological mission is to search for and access Earl Dorr's DEEP legendary caverns. (in our lifetimes!)

Cathy's Cave has shown us how completely mother nature, or Earl Dorr, could hide a cave entrance. Our EM-83 also has shown us how well electronic surveys can help to reveal hidden geology.

LET'S EXPAND THE HORIZONS OF HOW DEEP ELECTRONIC SURVEYING MAY HELP US NOW!

Mr. V.G. Hewitt, President of the company that manufactures the EM-83, also has other equipment and expertise which could help us. A few months ago, while discussing the history of this legend and our luck (or lack of it) he commented with a chuckle and a smile, "Well gosh! I don't understand why you're hunting an elephant but only shooting at rabbits." - meaning; If the canyon would be such a HUGE geological void, why were we only looking for small surface entrances, voids and passageways? Then he began to explain how to "hunt for an elephant" (i.e. the canyon) by shooting deeper with other types of electronic surveys first. This could be done by contracting him to operate his HEW-200 IP and resistivity unit. In theory, it provides data to map vertical, underground sections down to very great depths between 500 to 2,000 feet down. He explained the depth variation depends on the electrode separations and that the line lengths could cover several miles. During previous visits, we tried out two deep electronic-targeting techniques.) We began to think, if this could measure down 2,000 feet, he might enable us to target the top portion of the legendary canyon and prove if it is under the patented and unpatented claims.

Given our recent successes at shallow electronic surveying, this seems like a logical way to "hunt for the elephant". We would like to do this soon! Like the EM-83, the HEW-200 would identify patterns of hidden faults, caverns or mineralization but on a much larger and deeper scale.