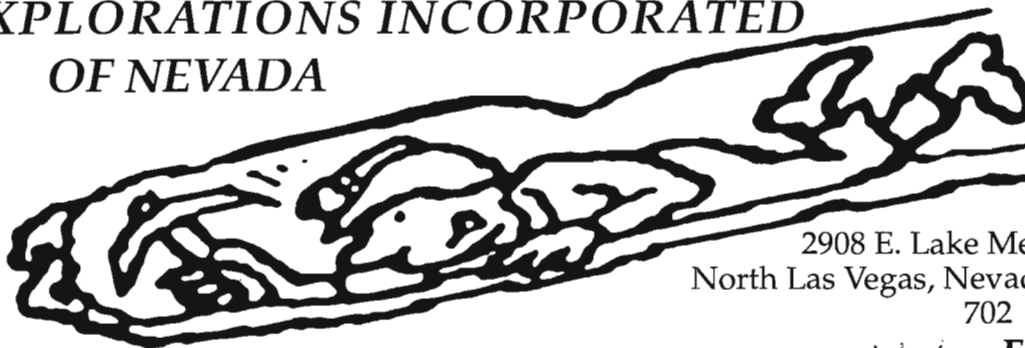


EXPLORATIONS INCORPORATED OF NEVADA



2908 E. Lake Mead Blvd.
North Las Vegas, Nevada 89030
702 649-6819

10/2/97 Fall 1997

— DEEP CAVERNS — WE'RE AT THE CROSSROADS!

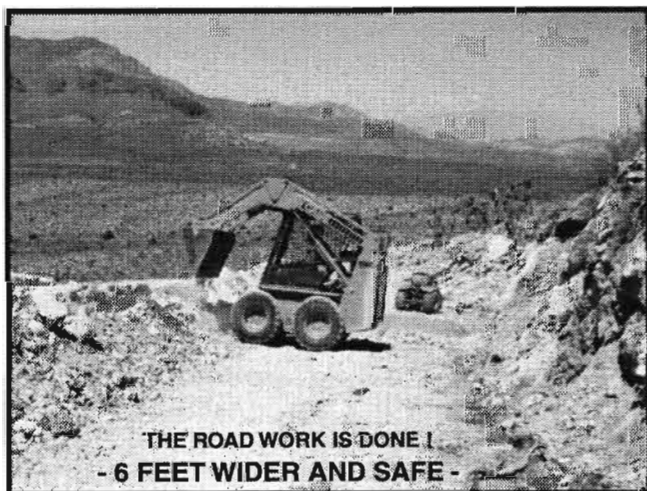
320 people attended the annual shareholder's picnic last June! After re-electing the same board of directors, good food and good friends made the day's events truly enjoyable! The most exciting highlight centered around results from our deep electronic surveys.

Under the patented mining claims the largest and deepest of several electronic targets is out-

side and deep below the Carbonate King mine entrance. Another significant electronic target is below and to the side of the plugged Rusty Red Hole. (see pg. 5) Getting equipment and crews to these locations quickly has been very difficult in the past. Now they are readily accessible due to months of hard work by dedicated volunteers. Larry Butler, with a

950 feet of new three-wheeler trail from the end of the Carbonate King road up to the Rusty Red Hole.

Now that these logistical crossroads have been reached, true exploratory work has begun in earnest on these curiously related projects. Our confidence and enthusiasm for physically proving and accessing new caverns is stronger than ever!



THE ROAD WORK IS DONE!
- 6 FEET WIDER AND SAFE -

dozen tried-and-true road crew members, has finished widening and berming 1,000 feet of road! In the meantime, Ralph and John (Buzz) drilled, blasted and shoveled

EXPLORATIONS INC. OF NEVADA

This newsletter is published three times a year to keep investors advised of the progress being made at Kokoweef Camp in the ongoing search for the legendary caverns, and as a reminder to all investors that their investments are needed.

President Larry Hahn
Newsletter Editor, Photography,
Research Ralph Lewis
Assistant Daryl Wade
Computer Graphics kinko's

Diamond drilling and cavern excavation are both important ways of finding good and useful knowledge relating to the Kokoweef legend.

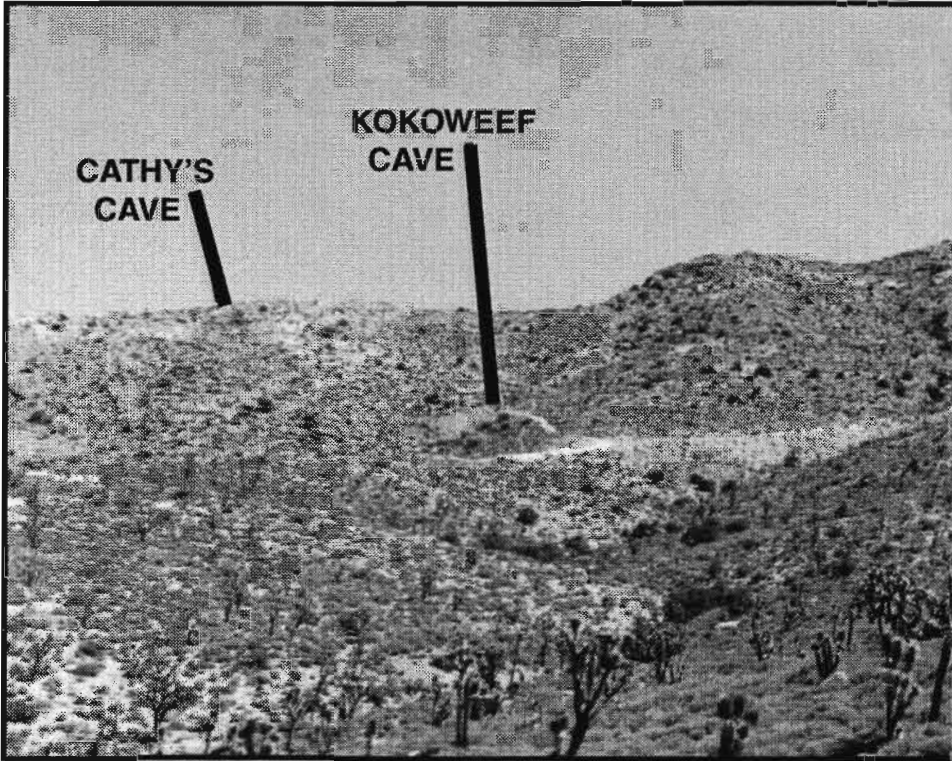
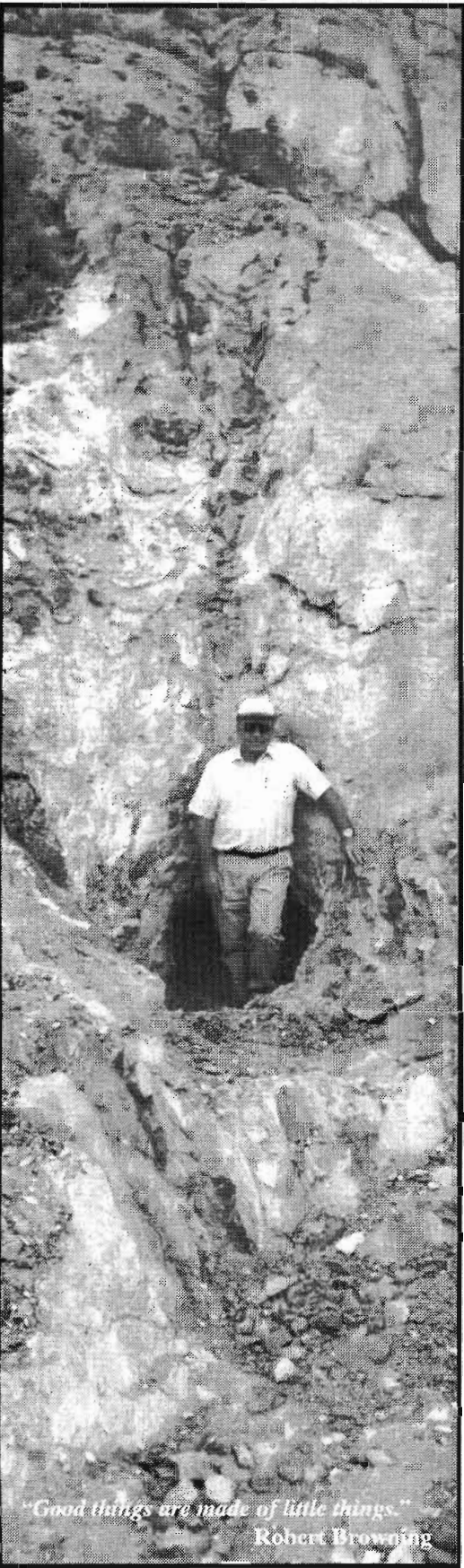
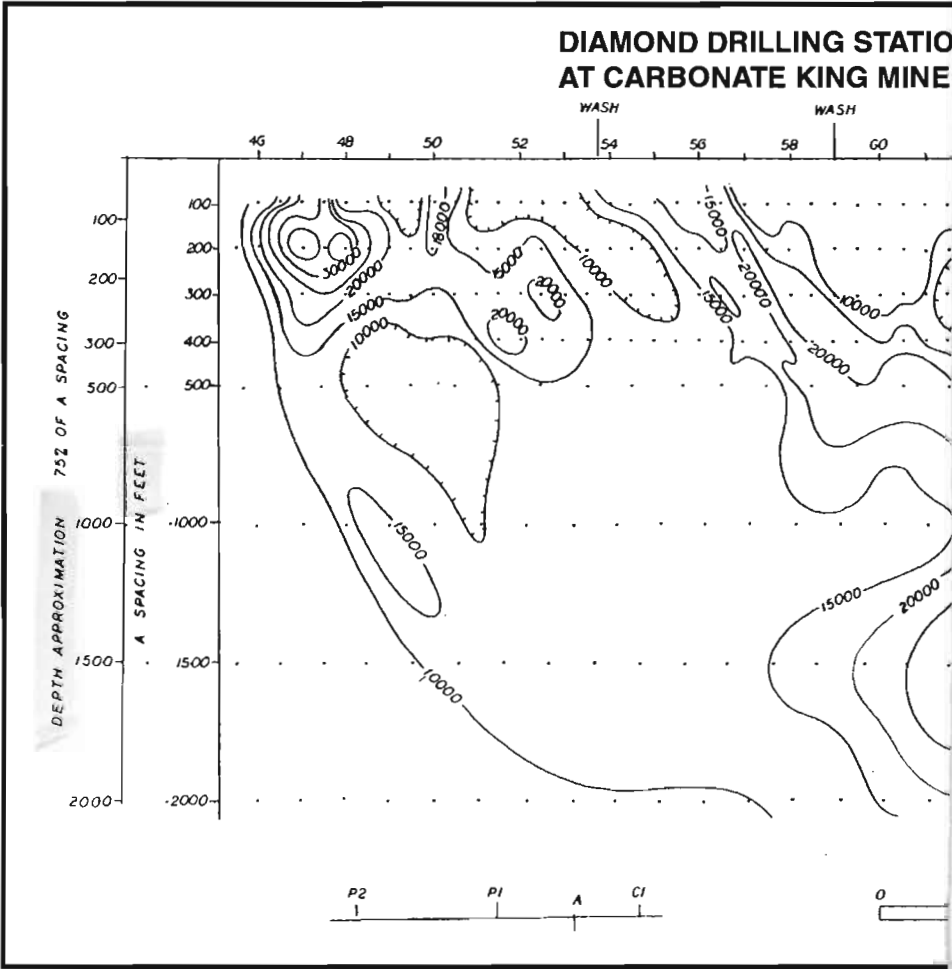


PHOTO ABOVE:
Site locations looking
East at Kokoweef Peak

MAP BELOW:



LEFT PHOTO: V. G. Hewitt stands at the original Rusty Hole. Work began soon after the EM-83 Pulse Detector
veys indicated a vertical open cavern 80 feet below.

WANT US TO GET DOWN TO NEW CAVERNS FASTER ?

...The 'good old days'

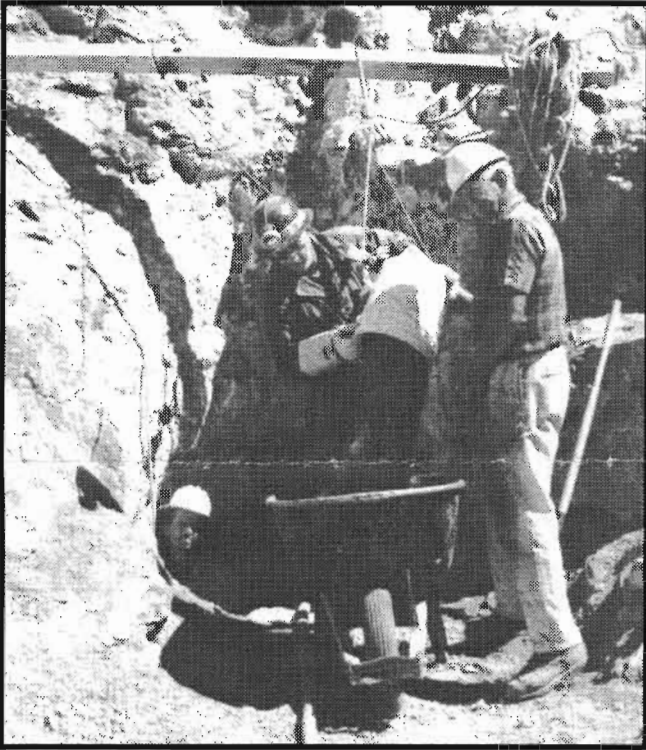
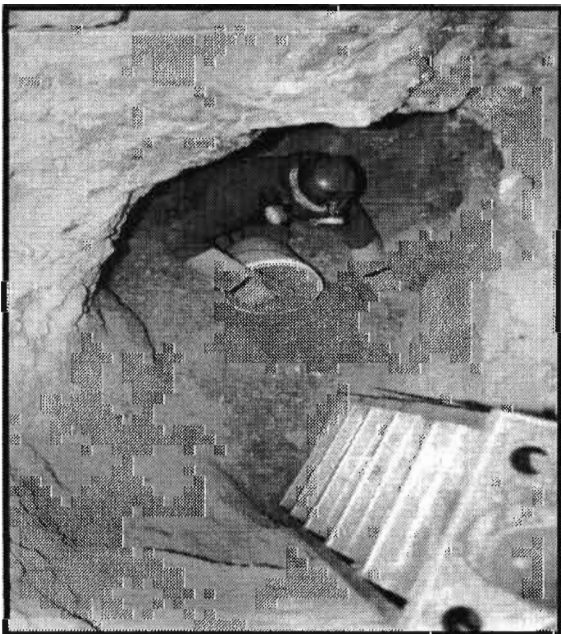


PHOTO ABOVE: (left to right) Ron Graham, Daryl Wade and Fred Lofftus demonstrate our current methods. Fred, a retired mining engineer and investor, was quick to notice our dedication and efforts are very limited by using a "primitive method".



...The 'good old days'

NEW TECHNOLOGY WE NEED!



Photo: by permission, Paul Hayes

© P. Hayes, 1997

—VS.—

VACUUM - EXCAVATION TECHNOLOGY CAN PULL DIRT & ROCKS UP 80 FEET AT 120 MILES PER HOUR!

LEFT PHOTO:

It's a miracle we get anything done the old way!
Hand digging is slow and exhausting! Here, Daryl
has to...

- fill a bucket
- climb a ladder
- lift a 60-pound bucket up 6 feet
- place it in a metal slide-ladder
- clip the bucket handle onto a pulley
- carry an empty bucket back down ...etc,etc

(... times 60 buckets per day = very slow,
exhausting digging)

As any hole gets deeper, hand-digging typically,
requires more people, becomes much slower and
is more hazardous to anyone below.

UP-TO-DATE CONTRACTORS RELY ON VACUUM-EXCAVATION TECHNOLOGY!

It's *obvious!*
Hand-digging is accompanied by the very real drawbacks of being very slow and prone to cause fatigue, irritability and accidents.
Vacuum-excavation technology is *the solution!*

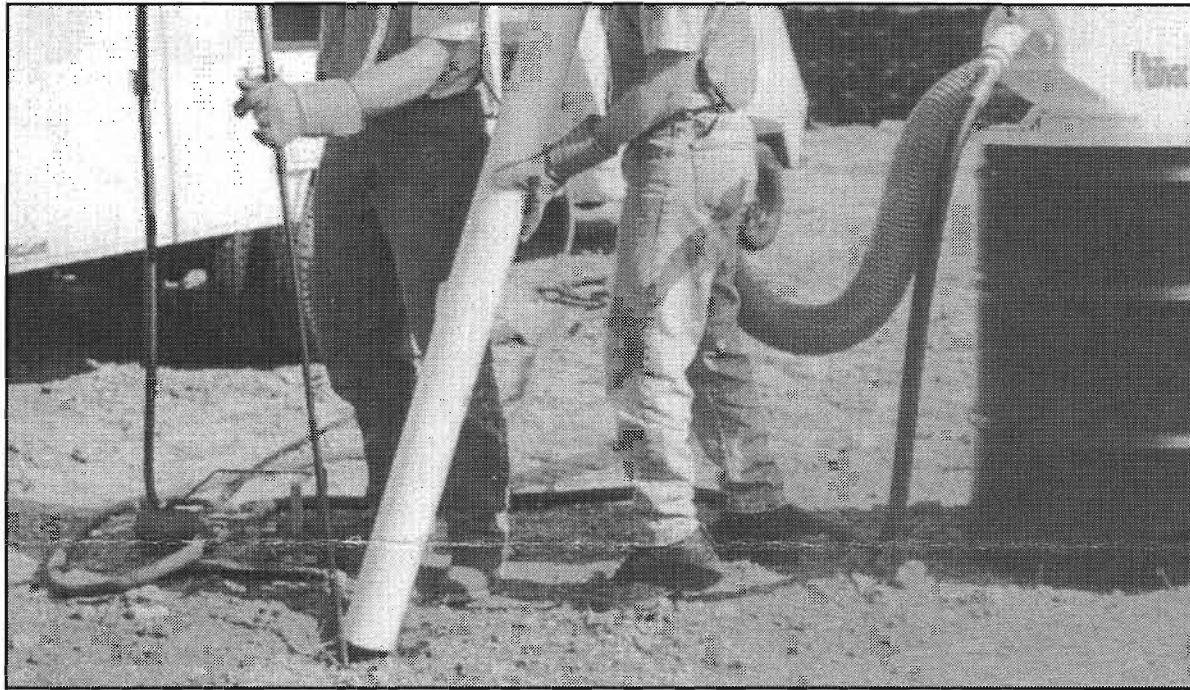


Photo: by permission, Paul Hayes

© P. Hayes, 1997

EXCAVATING BLACK SANDS FROM THE RIVER-OF-GOLD WILL BE ANOTHER GREAT USE FOR THIS VACUUM-TECHNOLOGY!

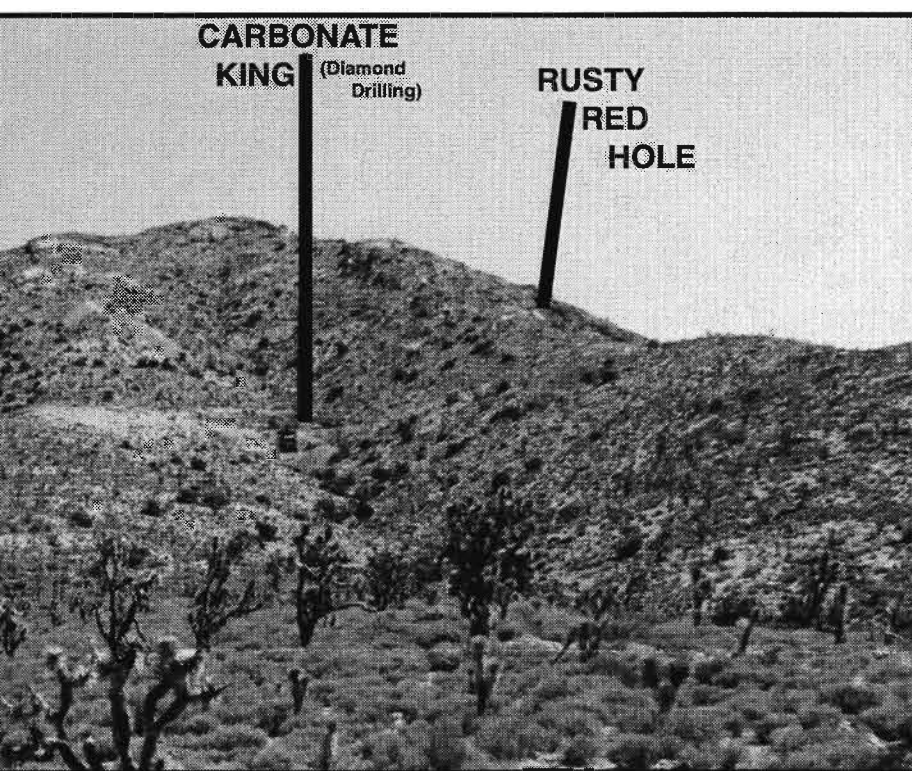
The basic system pictured here consists of the Utilivac air-engine with a **lifetime warranty**, a super sonic air lance, drum-mounted topsoil separator and the control valve. (We already own the 185 cfm compressor to drive it.) The cost is between \$5,000.⁰⁰ and \$14,000.⁰⁰ depending on a range of other accessories selected.

Our old "bucket system" averages about 3 1/2 muscle-exhausting hours to fill a 55 gallon drum; it only takes a Utilivac system less than 5 minutes!!! **Now that's simply cost-effective production.**

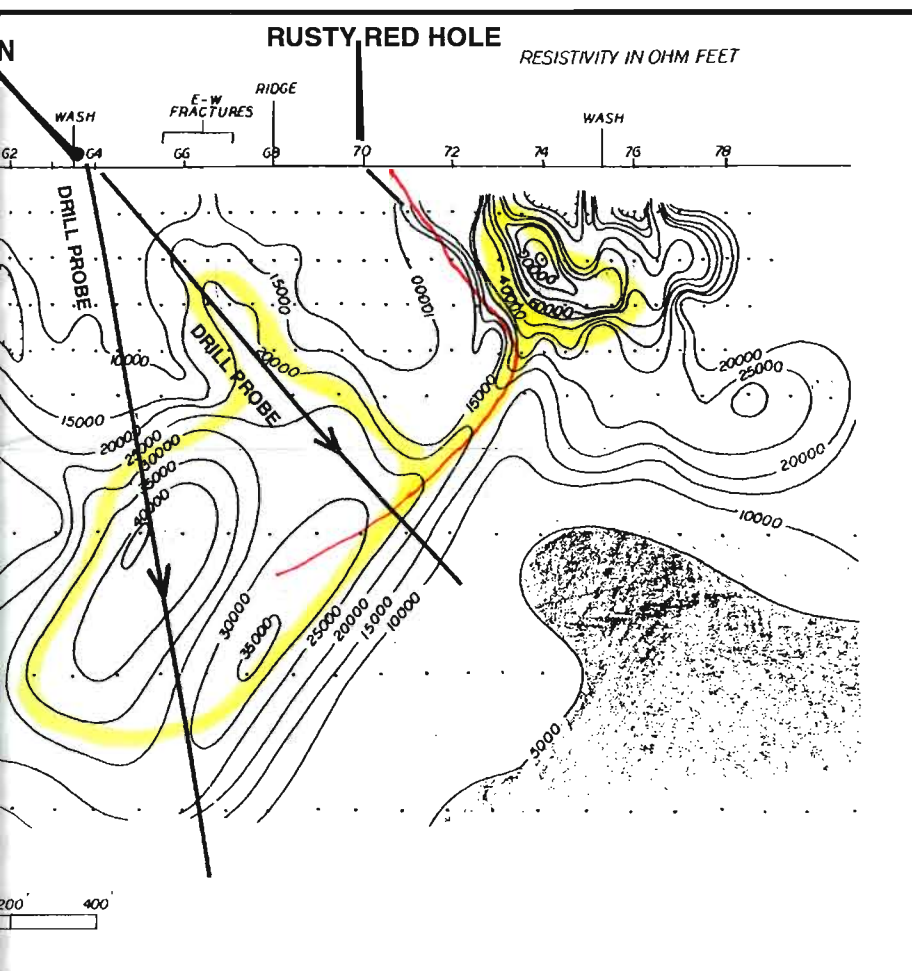
In addition, this very portable, compact system rapidly removes blasting or radon gases and dust. Only *two* people are needed for full operations. There are even distinct benefits for use in future tunneling applications.

To fully demonstrate the system's capabilities, Utilivac's representative is giving us a free on-site field test first. Today we're fully confident we'll need this professionally engineered technology to dramatically speed up our quest to find caverns leading to our **River-of-Gold**. The guys doing our hand-digging exclaim: ***"If you care, Please! Show us your \$support!"***

...Thank You!



This vertical electronic “slice” shows two large features deep below the Carbonate King and Rusty Red Hole.



Red
sur-

“Riches may enable us to confer favors, but to confer them with propriety and grace requires something that riches cannot give.”

— Charles Caleb Colton, “Lacon” (1825)

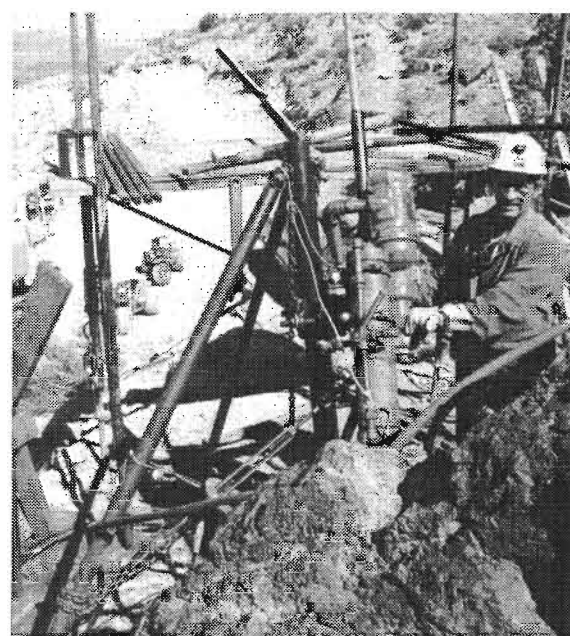


PHOTO ABOVE:

Larry Butler tunes up the diamond drill after ending 3 months of hard drilling & blasting to widen the access road.

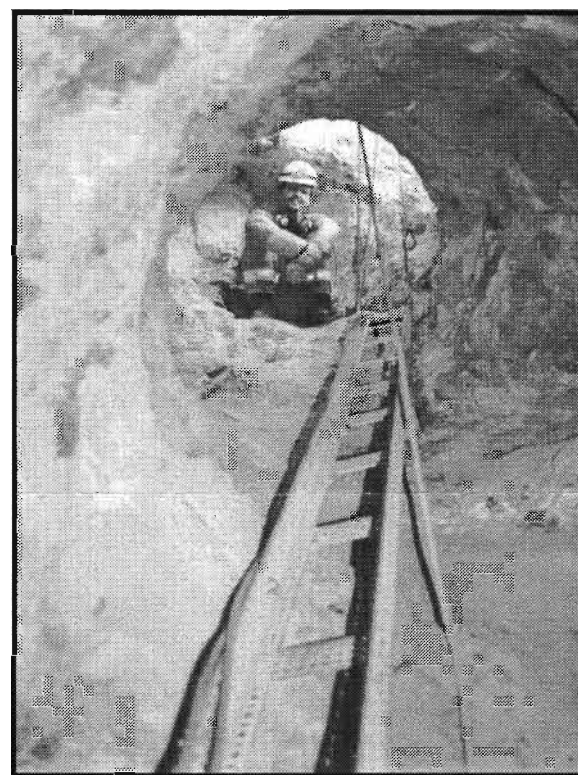
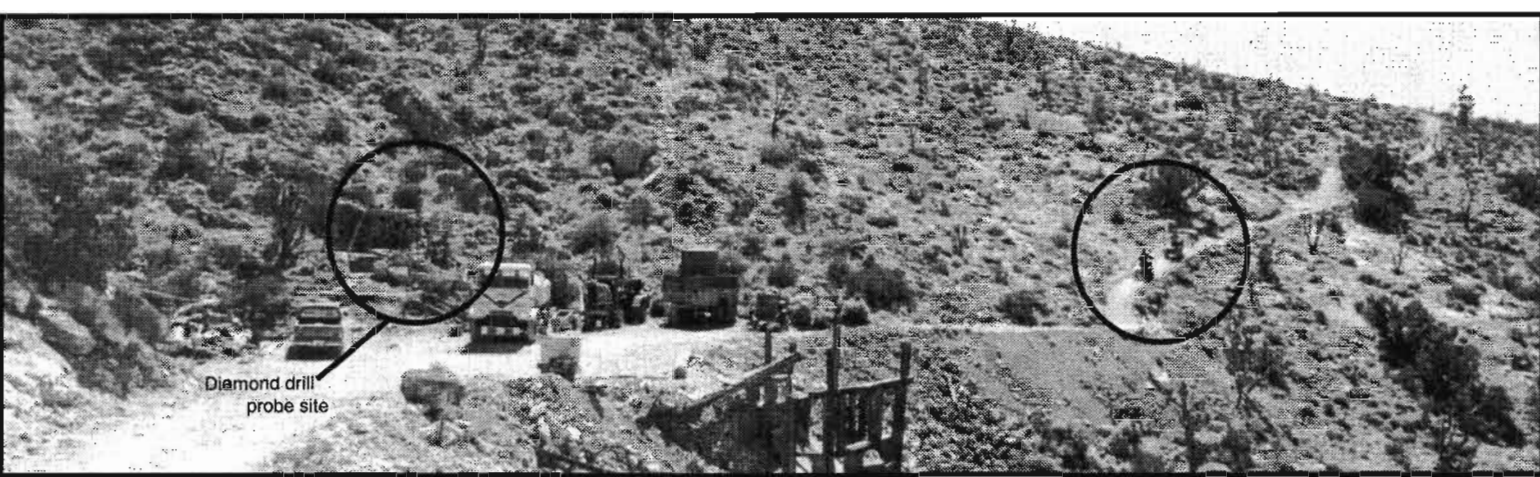


PHOTO ABOVE:

Ron Graham sits inside the top of the Rusty Red Hole. In two months, a handful of volunteer investors have slowly dug down 20' to ever-larger cavern pockets. A BIG vacuum will tremendously speed up our progress!



ABOVE: Riders zip up from the Carbonate King along the new trail to the Rusty Red Hole

TWO PROJECTS: ONE GOAL

Diamond drilling is fast and seeks to prove depth of voids, air flow or minerals. Even if multiple holes are drilled to identify a target, it is much less expensive "data collection" than full-bore tunnelling. While tiny cameras can be lowered into probe holes, we cannot send people and supplies through a 1 1/2 inch diameter probe hole. **Cavern excavations** hold the hope of providing a potential passage for people to physically descend into the anticipated deeper caverns. While neither method can guarantee success, our professional **electronic surveys** are confidently guiding both projects. Ultimately, today's projects are each directed toward identifying and accessing the same target below the Carbonate King Mine. (Map, pg. 5)

It is our hope that a cavern passage could allow complete, internal cavern inspections and surveying to find the shortest (least expensive) and safest place to drive future tunnels. Such passages could be natural, ready-made emergency exits, or ventilation shafts, when connected to a tunnel. Both diamond drilling and excavating are sensible methods when guided by geo-physical facts and not solely by "pure" imaginations. Although different in nature, they are both important and worthwhile, for good reasons, to help us achieve our common goal.



**YOUR DESCENT TEAM IS READY,
...THANKS TO YOUR SUPPORT!**

- Harmony
- Strength
- Confidence

(L. to R.), Ron, Steve, Alison, Ralph, Daryl, Mike, Aaron, Eddie, Frank & Drew
(not shown: Larry B, Jerry, Skip).

Everybody rappelled down a 180' vertical mine shaft below the ladder! **AND!...** climbed the rope the full distance, without assistance, using ascenders, muscles, and determination. All trained team members who pass the training course are now certified and meet the National Fire Protection Assoc. standards which exceed both O.S.H.A. and M.S.H.A. requirements. Interested in being involved? Call Steve Ekmark at (702) 371-9422 or (702) 438-6280



"The influence of a beautiful, helpful, hopeful character is contagious." ---Eleanor H. Porter

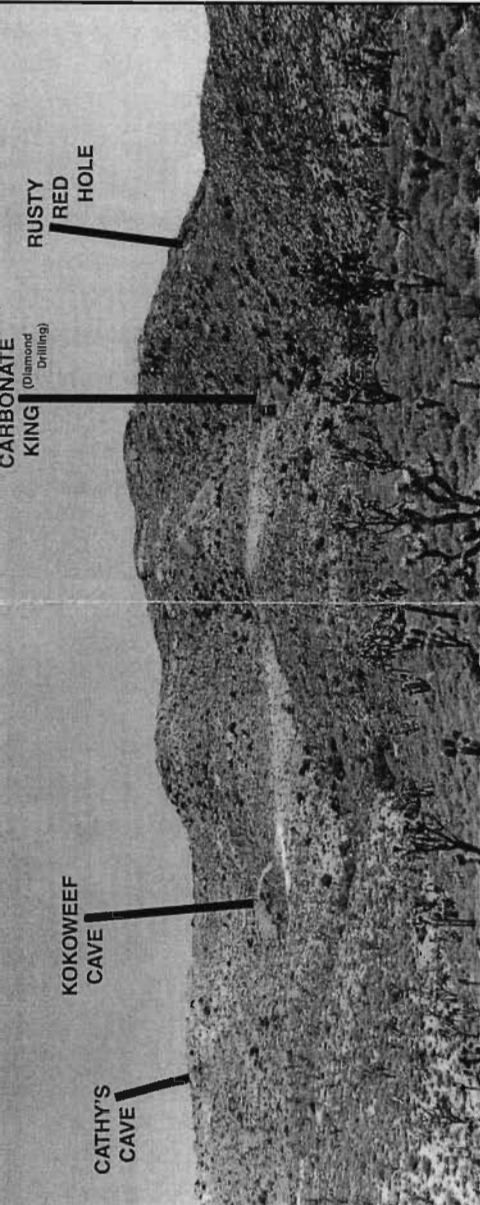


PHOTO ABOVE:

White locations looking east at Kokoweef Peak

MAP BELOW: This vertical electronic "slice" shows two large features deep below the Carbonate King and Rusty Red Hole.

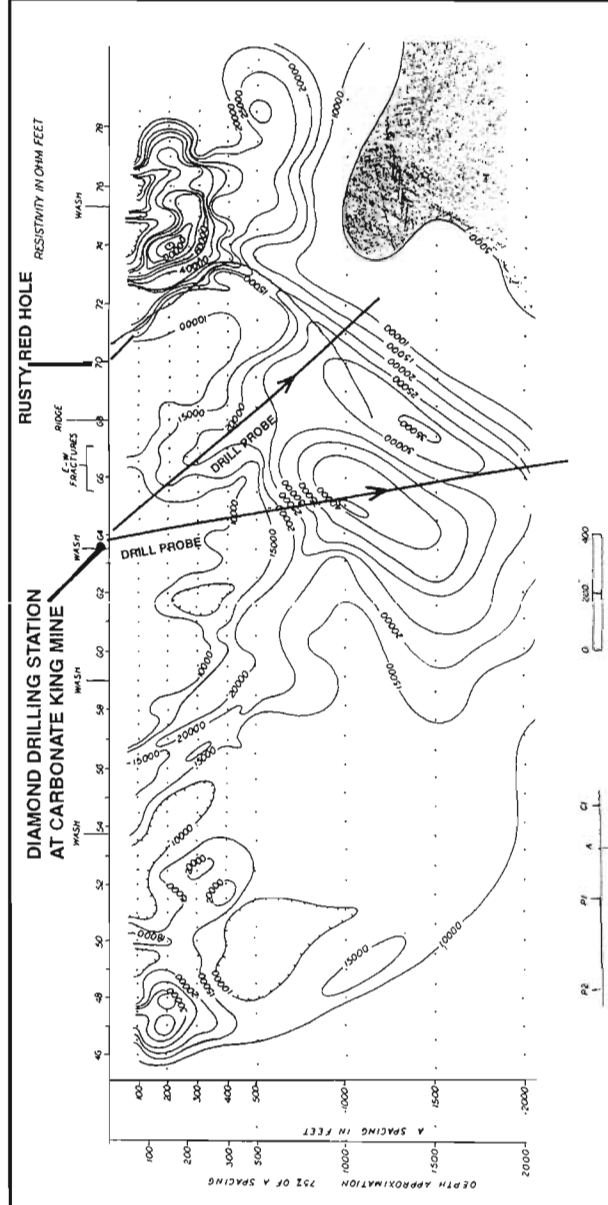


PHOTO ABOVE:

Larry Butler tunes up the diamond drill after ending 3 months of hard drilling & blasting to widen the access road.

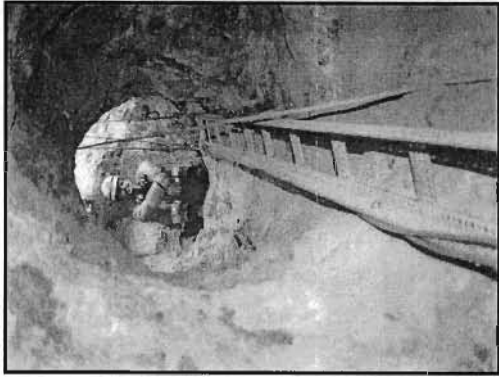


PHOTO ABOVE:

Ron Graham sits inside the top of the Rusty Red Hole. In two months, a handful of volunteer investors have slowly dug down 20' to ever-larger

Diamond drilling and cavern excavation are both important ways of finding good and useful knowledge relating to the Kokoweef legend.



"Don't believe an 'image of little things'"
Robert Weissenberg

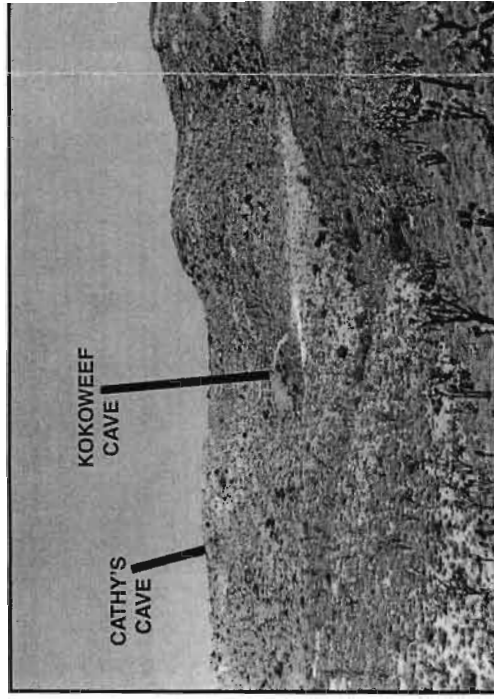
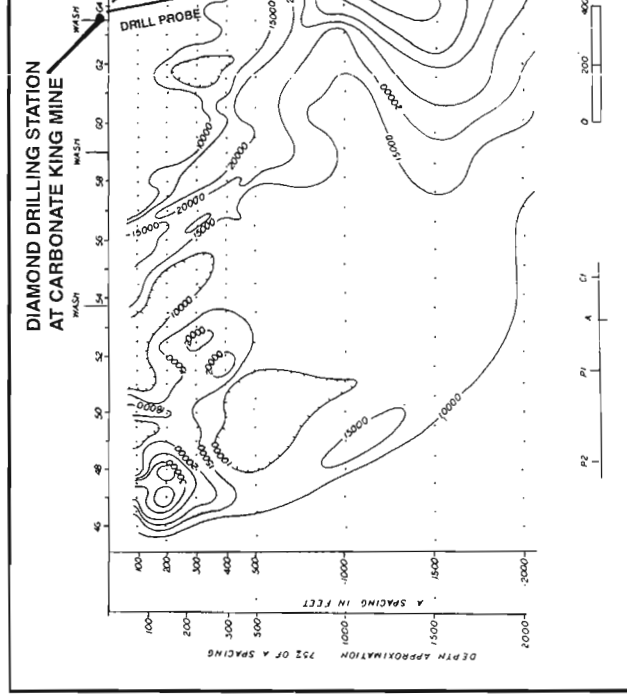


PHOTO ABOVE:

Site locations looking East at Kokoweef Peak

MAP BELOW: This view deep below



LEFT PHOTO: V. G. Hewitt stands at the original Rusty Red Hole. Work began soon after the EM-83 Pulse Detector surveys indicated a vertical open cavern 80 feet below.